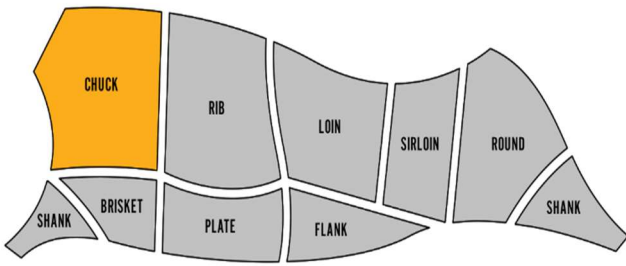


**BEXAR**  
BARBECUE



**BEEF CUT SHEET**

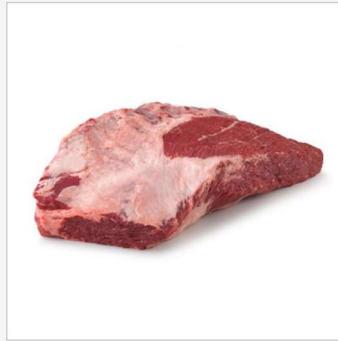
[www.bexarbarbecue.com](http://www.bexarbarbecue.com)



**CHUCK ROLL** | SUBPRIMAL CUT



CHUCK EYE ROLL



UNDER BLADE

**CHUCK SHORT RIBS** | SUBPRIMAL CUT



CHUCK SHORT RIBS, BONELESS

**SHOULDER CLOD** | SUBPRIMAL CUT



SHOULDER CLOD HEART | LEAN



TOP BLADE

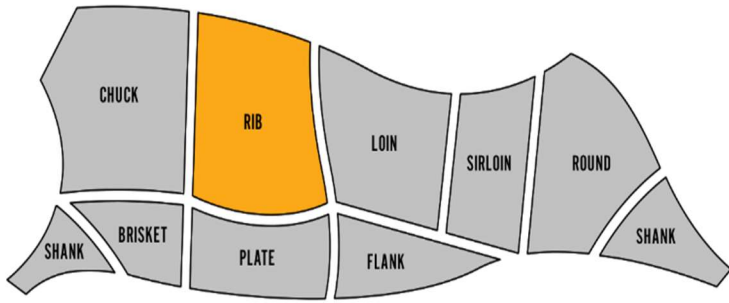
**CHUCK TENDER** | SUBPRIMAL CUT



CHUCK TENDER STEAK | LEAN



CHUCK TENDER ROAST | LEAN



**RIBEYE ROLL, LIP-ON** | SUBPRIMAL CUT



**RIBEYE ROAST**



**RIBEYE STEAK**



**RIBEYE ROLL**



**BACK RIBS**



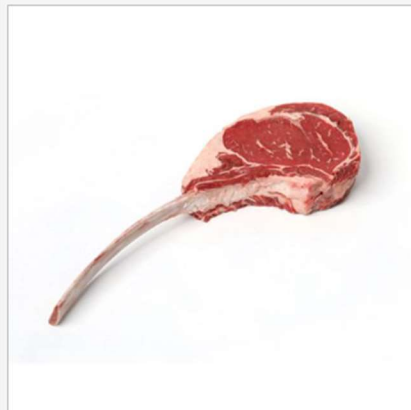
**BLADE/LIFTER MEAT**



**RIB SHORT RIBS**



**RIB STEAK, BONE IN**

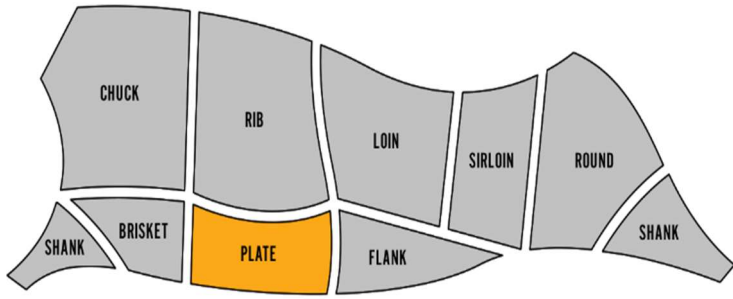


**TOMAHAWK STEAK**



**PRIME RIB ROAST**





HANGER STEAK



INSIDE SKIRT



OUTSIDE SKIRT



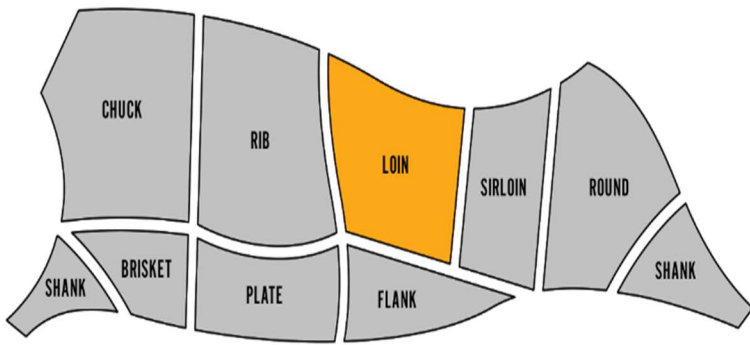
PLATE SHORT RIBS



FLANKEN STYLE SHORT RIBS



HANGING TENDER



**SHORT LOIN** | SUBPRIMAL CUT



T-BONE STEAK



PORTERHOUSE STEAK



LOIN STEAK TAIL

**TENDERLOIN, BONELESS** | SUBPRIMAL CUT



CHATEAUBRIAND TENDERLOIN ROAST | LEAN



TENDERLOIN STEAK (FILET MIGNON) | LEAN



TENDERLOIN BUTT, DEFATTED

**STRIP LOIN, BONELESS** | SUBPRIMAL CUT



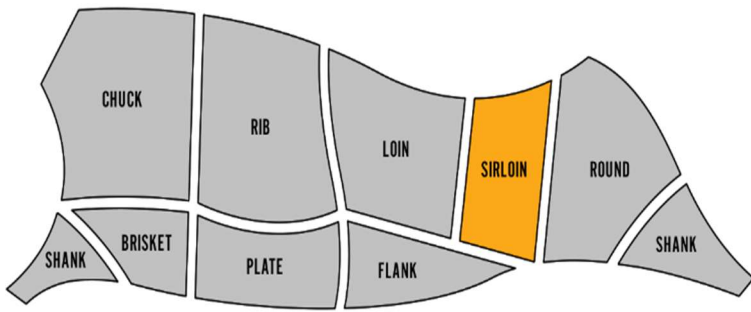
STRIP FILET | LEAN



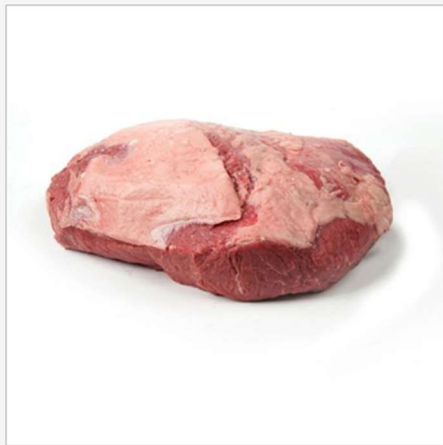
STRIP PETITE ROAST | LEAN



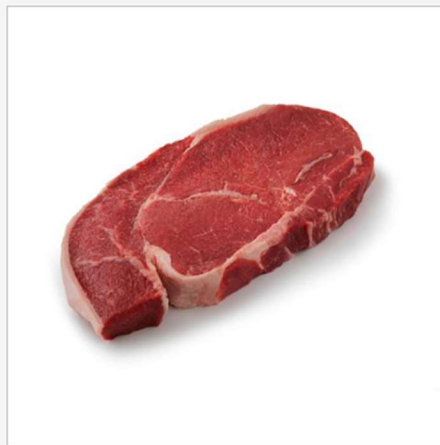
STRIP STEAK, BONELESS | LEAN



**TOP SIRLOIN BUTT** | SUBPRIMAL CUT



TOP SIRLOIN BUTT, CENTER-CUT



TOP SIRLOIN STEAK | LEAN



TOP SIRLOIN PETITE ROAST | LEAN

**BOTTOM SIRLOIN BUTT** | SUBPRIMAL CUT



TRI-TIP ROAST | LEAN

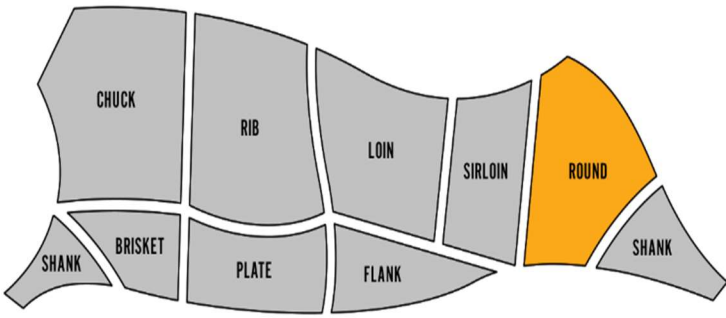


SIRLOIN BAVETTE/FLAP



PETITE SIRLOIN STEAK

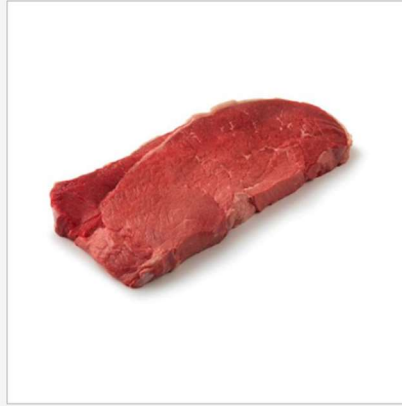




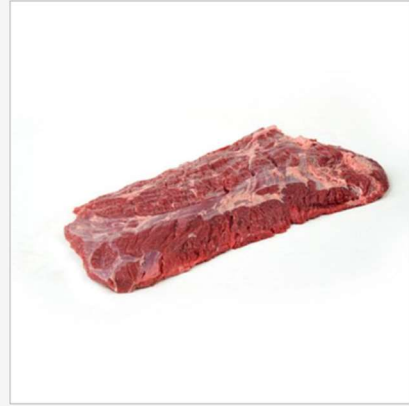
**TOP (INSIDE) ROUND | SUBPRIMAL CUT**



TOP (INSIDE) ROUND, CAP-OFF

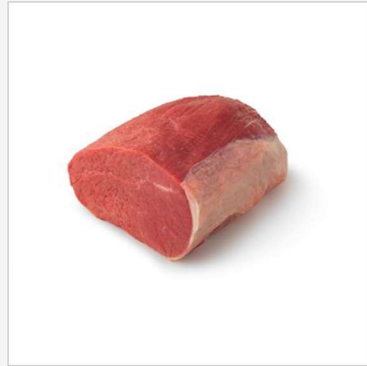


TOP ROUND STEAK | LEAN

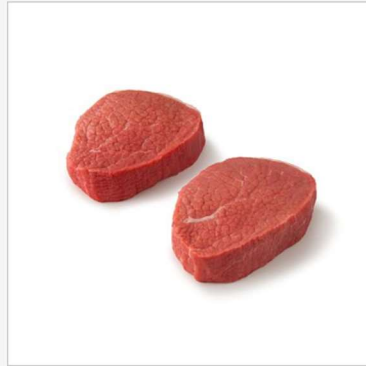


TOP (INSIDE) ROUND CAPI | LEAN

**EYE OF ROUND | SUBPRIMAL CUT**

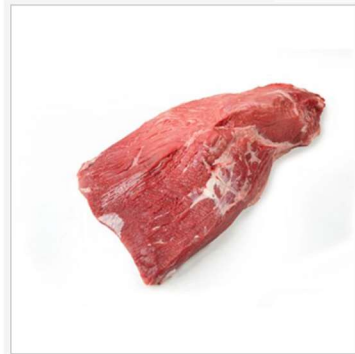


EYE OF ROUND ROAST | LEAN



EYE OF ROUND STEAK | LEAN

**BOTTOM ROUND | SUBPRIMAL CUT**



OUTSIDE ROUND (FLAT)

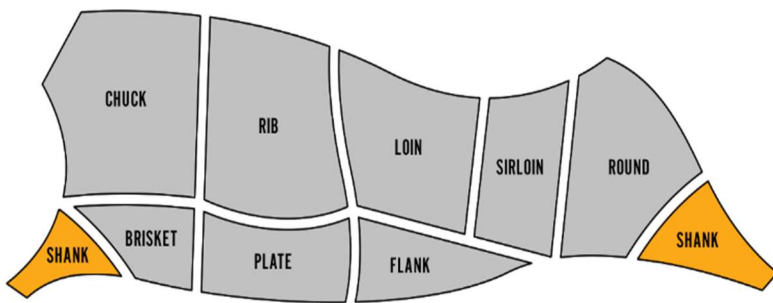
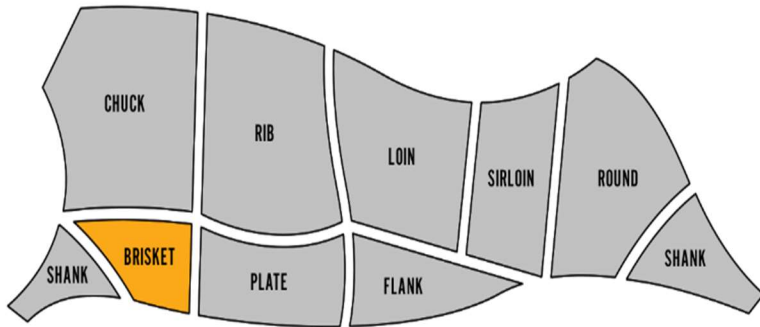
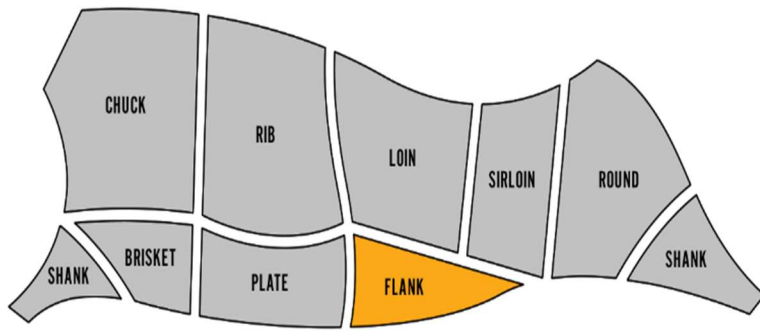
**SIRLOIN TIP | SUBPRIMAL CUT**



SIRLOIN TIP ROAST | LEAN



SIRLOIN TIP STEAK | LEAN



## Offall Cuts

- Heart
- Liver
- Oxtail
- Cheek
- Tongue
- Suet (grain fed)
- Soup Bones

## Beef Trims

- Burger ratio -
- Chili grind -
- Stew qty -